

A41

# GIGUE du FORGERON (tr. blacksmith's dance)

D Emin A

D

5 Bmin7 Emin A

9 D D D7/F# G G/B D

1. 2.

Emin A ~~F#~~ dim D/F# G D

17 A D D7/F# D

1. 2.

Detailed description: The musical score is written in treble clef with a key signature of two sharps (D major) and a 6/8 time signature. It consists of five staves of music. The first staff begins with a treble clef, a key signature of two sharps, and a 6/8 time signature. Above the staff are the chords D, Emin, and A. A handwritten 'D' is written below the first measure. The second staff starts at measure 5 and has chords Bmin7, Emin, and A above it. The third staff starts at measure 9 and features first and second endings. Above the staff are the chords D, D, D7/F#, G, G/B, and D. The fourth staff starts at measure 13 and has chords Emin, A, ~~F#~~ dim, D/F#, G, and D above it. The fifth staff starts at measure 17 and has chords A, D, D7/F#, and D above it, also featuring first and second endings.

# A42 Quadrille Acadien

1 G C Am D

5 G D7 G C Am D

9 G D7 G G D7 G G

13 Am D7 G G C

17 Am D7 G D7 G G D7 G

Detailed description: The image shows a musical score for a piece titled 'Quadrille Acadien' (A42). The music is written in G major (one sharp) and 4/8 time. It consists of five staves of music. The first staff starts with a treble clef, a key signature of one sharp (F#), and a 4/8 time signature. The melody is primarily eighth notes, often beamed in pairs. Chords are indicated above the staff: G, C, Am, and D. The second staff continues the melody with chords G, D7, G, C, Am, and D. The third staff features a first ending bracket over the first two measures, with chords G, D7, G and G, D7, G, followed by a second ending bracket over the last two measures with a chord G. The fourth staff has chords Am, D7, G, G, and C. The fifth staff has chords Am, D7, G, D7, G and G, D7, G. The piece concludes with a double bar line.

# Angels We Have Heard On High

Traditional

♩=80

## Verses

D A D A/C# D D/A A7 D Bm F#7 Bm A

1An - gels we have heard on high sweet - ly sing - ing o'er the plains. And the moun - tains  
 2Shep - herds why this ju - bi-lee? Why your joy - ous strains pro - long? What the glad - some  
 3Come to Beth - le - hem and see Him whose birth the an - gels sing. Come a - dore on  
 4See Him in a man - ger laid, whom the choirs of an - gels praise. Mar - y, Jo - seph,

D/F# A7/E D A/C# D D/A A7 D

in re - ply ech - o - ing their joy - ous strains.  
 tid - ings be which in - spite your heav'n - ly song?  
 bend - ed knee Christ the Lord, the new - born King.  
 lend your aid while our hearts in love we raise.

## Chorus

B7 EmA7/C# D G/B A D A D G D/AA D B7 EmA7 D G/B

Glo - ri - a In ex - cel - sis De - o. Glo -

A7 D A D G D/AA7/D 1<sup>st</sup> Barmata

- ri - a In ex - cel - sis De - o. o.

## 'Drive the Cold Winter Away'

Em G Bm C Am

C B7 B7/D# G

G/B Am Am/C Em B 1. B7

Em Em/G 2. B7 Em Em

A44  
1. the Christmas Polka

♩=240



Rhythm: Polka

Source: Jackie Daly

Discography: Many's a Wild Night

Transcription: Loma <Mitsel950@aol.COM>

41681. Ducks Die at Christmas

Básaitear na Lachain Lá Nollag

♩=360



Rhythm: jig

Source: B.Breathnach: "Ceol Rince na hEireann" IV/68

Transcription: B.Black

1. the Maid at the Well

the Maids of Glencoe

the Christmas Jig



Source: Philippe Varlet <philvar@erols.com> irtrad-l 1000-02-02

## Paddy O'Brien's Sets

## The Bowlegged Tailor

Musical notation for 'The Bowlegged Tailor' in 6/8 time, key of D major. The piece consists of three staves of music. The first staff begins with a treble clef, a key signature of one sharp (F#), and a 6/8 time signature. The melody is written in a single line. The second staff continues the melody, featuring a repeat sign with first and second endings. The third staff concludes the piece with a final cadence.

## O'Mahony's

Musical notation for 'O'Mahony's' in 6/8 time, key of D major. The piece consists of three staves of music. The first staff begins with a treble clef, a key signature of one sharp (F#), and a 6/8 time signature. The melody is written in a single line. The second staff continues the melody, featuring a repeat sign with first and second endings. The third staff concludes the piece with a final cadence.

## Father Fielding's Favorite

Musical notation for 'Father Fielding's Favorite' in 6/8 time, key of D major. The piece consists of four staves of music. The first staff begins with a treble clef, a key signature of one sharp (F#), and a 6/8 time signature. The melody is written in a single line. The second staff continues the melody, featuring a repeat sign with first and second endings. The third and fourth staves continue the melody to its conclusion.

# A46

Paddy O'Brien's Sets

## Boys of Ballysodare



Musical notation for 'Boys of Ballysodare' in G major, 4/4 time. The piece consists of four staves of music. The first staff contains the main melody. The second and third staves provide a harmonic accompaniment with a steady eighth-note bass line. The fourth staff concludes the piece with a final cadence.

## Pat Tuohy's



Musical notation for 'Pat Tuohy's' in G major, 4/4 time. The piece consists of three staves of music. The first staff contains the main melody. The second and third staves provide a harmonic accompaniment with a steady eighth-note bass line. The piece ends with a double bar line.

## Birmingham



Musical notation for 'Birmingham' in G major, 4/4 time. The piece consists of four staves of music. The first staff contains the main melody. The second and third staves provide a harmonic accompaniment with a steady eighth-note bass line. The fourth staff concludes the piece with a final cadence.

A47

Paddy O'Brien's Sets

Bush in Bloom

Musical notation for 'Bush in Bloom' consisting of four staves. The first staff is the melody in treble clef, G major, 4/4 time. The second staff is a second voice in treble clef. The third and fourth staves are accompaniment in treble clef, featuring a steady eighth-note pattern.

Congress

Musical notation for 'Congress' consisting of four staves. The first staff is the melody in treble clef, G major, 4/4 time. The second staff is a second voice in treble clef. The third and fourth staves are accompaniment in treble clef, featuring a steady eighth-note pattern with triplets marked with a '3'.

Ewe Reel

Musical notation for 'Ewe Reel' consisting of four staves. The first staff is the melody in treble clef, G major, 4/4 time. The second staff is a second voice in treble clef. The third and fourth staves are accompaniment in treble clef, featuring a steady eighth-note pattern.

# A48

Paddy O'Brien's Sets

## Christmas Eve

Tommy Coen

Musical notation for the piece "Christmas Eve" by Tommy Coen. It consists of four staves of music in G major and 6/8 time. The first staff contains the first line of the melody. The second and third staves contain the second and third lines, respectively, with repeat signs at the end of the second line. The fourth staff contains the final line of the piece, ending with a double bar line and repeat dots.

## Bunker Hill

Musical notation for the piece "Bunker Hill". It consists of four staves of music in G major and 6/8 time. The first staff contains the first line of the melody. The second and third staves contain the second and third lines, respectively, with repeat signs at the end of the second line. The fourth staff contains the final line of the piece, ending with a double bar line and repeat dots.

## The Hunter's Purse

Musical notation for the piece "The Hunter's Purse". It consists of three staves of music in G major and 6/8 time. The first staff contains the first line of the melody. The second staff contains the second line, with a repeat sign at the end. The third staff contains the final line of the piece, ending with a double bar line and repeat dots.



A49

Paddy O'Brien's Sets

Crooked Road to Dublin

Three staves of musical notation for the piece 'Crooked Road to Dublin'. The music is written in treble clef with a key signature of one sharp (F#) and a common time signature (C). The first staff contains the first line of the melody. The second staff continues the melody with a repeat sign at the end. The third staff features a more complex melodic line with many slurs and ties.

College Grove

Five staves of musical notation for the piece 'College Grove'. The music is written in treble clef with a key signature of one sharp (F#) and a common time signature (C). The first staff shows the beginning of the melody. The second staff continues with a repeat sign. The third and fourth staves contain dense, fast-moving melodic passages with many slurs. The fifth staff concludes the piece with a final melodic phrase.

Killaghbeg House

Also known as: Ah, Surely

Three staves of musical notation for the piece 'Killaghbeg House'. The music is written in treble clef with a key signature of one sharp (F#) and a common time signature (C). The first staff begins with a single eighth rest followed by the melody. The second staff continues the melody with a repeat sign. The third staff features a fast, intricate melodic line with many slurs and ties.

# A50

Paddy O'Brien's Sets

## First Night in America

Musical notation for 'First Night in America' in G major and 6/8 time. The piece consists of three staves. The first staff begins with a treble clef, a key signature of one sharp (F#), and a 6/8 time signature. The melody features a series of eighth notes and quarter notes, with a four-measure rest (marked '4') in the middle. The second staff continues the melody, ending with a repeat sign. The third staff provides a concluding phrase with a final double bar line.

## Apples in Winter

Musical notation for 'Apples in Winter' in G major and 6/8 time. The piece consists of four staves. The first staff begins with a treble clef, a key signature of one sharp (F#), and a 6/8 time signature. The melody is composed of eighth and quarter notes. The second staff continues the melody, ending with a repeat sign. The third staff begins with a first ending bracket labeled '1.'. The fourth staff begins with a second ending bracket labeled '2.', which concludes the piece with a final double bar line.

## The Rakes of Clonmel

Musical notation for 'The Rakes of Clonmel' in G major and 6/8 time. The piece consists of four staves. The first staff begins with a treble clef, a key signature of one sharp (F#), and a 6/8 time signature. The melody features eighth and quarter notes, with a four-measure rest (marked '4') in the middle. The second staff continues the melody, ending with a repeat sign. The third and fourth staves provide a concluding phrase with a final double bar line.

# Flowers of Edinburgh

James Oswald

twice  $\vee$

intro

# Mrs. MacLeod of Raasay

Sir Alexander MacDonald

twice  $\vee$

# A52

Paddy O'Brien's Sets

## Follow Me Down

Musical notation for the piece "Follow Me Down". It consists of three staves of music in G major and 4/4 time. The first staff contains the first eight measures. The second staff contains the next eight measures, including a repeat sign. The third staff contains the final eight measures, with first and second endings marked "1." and "2." respectively.

## Milliner's Daughter

Musical notation for the piece "Milliner's Daughter". It consists of three staves of music in G major and 4/4 time. The first staff contains the first eight measures. The second staff contains the next eight measures, including a repeat sign. The third staff contains the final eight measures, including a repeat sign.

## Sailor's Jacket

Musical notation for the piece "Sailor's Jacket". It consists of three staves of music in G major and 4/4 time. The first staff contains the first eight measures. The second staff contains the next eight measures. The third staff contains the final eight measures.

Acc. 4/1<sup>st</sup> of 3 beats

# A53

## THE FOXHUNTER'S JIG

Musical score for 'The Foxhunter's Jig' in G major, 3/8 time. The score consists of four staves. The first staff contains the melody with notes and rests. The second staff contains a bass line with notes and rests. The third and fourth staves contain guitar accompaniment with chords and notes. Chords are indicated by letters above the notes: D, G, D, A, D, G, D, A, G, Em, A, D, G, D, A, G, Em, A, D.

## Johnny Docherty's

Musical score for 'Johnny Docherty's' in G major, 3/8 time. The score consists of four staves. The first staff contains the melody with notes and rests. The second staff contains a bass line with notes and rests. The third and fourth staves contain guitar accompaniment with chords and notes. Chords are indicated by letters above the notes: G, C, G, C, G, D, G, C, G, D, G, C, G, D, G.

## THE BUTTERFLY

John Potts

Musical score for 'The Butterfly' in G major, 3/8 time. The score consists of three staves. The first staff contains the melody with notes and rests. The second and third staves contain guitar accompaniment with chords and notes. Chords are indicated by letters above the notes: Em, G, Bm, Em, G, Bm, Em, A7, Bm, G, D, Em, C, G, Em, G, Em, D7, G, Em, G, Em, B7, Em, Bm, G, Em, B7, G, Em, G.

THE GALWAY RAMBLER  
WALSH'S FAVORITE  
WELLINGTON'S

Musical score for 'THE GALWAY RAMBLER' in G major, 4/4 time. The score consists of three staves. The first staff contains the melody with chords G, D7, G/B, C, G/B, G, C, D7, G, C. The second staff contains a bass line with chords G/B, Am, G/B, C, Am, D7, G, C, G/B, C. The third staff contains a bass line with chords G/B, D7, G/B, D7, G/B, C, G/B, Am, G/B, Em, Am, D7. A final G chord is indicated by a triangle symbol at the end of the piece.

TEMPERANCE REEL

Musical score for 'TEMPERANCE REEL' in G major, 4/4 time. The score consists of three staves. The first staff contains the melody with chords G, Em, D7, G. The second staff contains a bass line with chords Em, (C), D7, G, Em, D. The third staff contains a bass line with chords Em, (C), D7, G. The piece ends with a double bar line.

THE BANSHEE / MCMAHON'S REEL

Musical score for 'THE BANSHEE / MCMAHON'S REEL' in G major, 4/4 time. The score consists of three staves. The first staff contains the melody with chords G, C, D, G, C, G, Em, D, G, C. The second staff contains a bass line with chords D, G, C, G, Em, D, Am, C, Em, G. The third staff contains a bass line with chords Em, Am, C, Em, C, G, Em, D. The piece ends with a double bar line.

# A55

Paddy O'Brien's Sets

## Hartigan's Fancy



Musical notation for 'Hartigan's Fancy' in G major and 6/8 time. The piece consists of four staves of music. The first staff begins with a treble clef, a key signature of one sharp (F#), and a 6/8 time signature. The melody is written in a single line. The second staff continues the melody and includes a repeat sign with first and second endings. The third staff features a four-measure rest marked with a '4' and continues the melody. The fourth staff concludes the piece with a final cadence and a repeat sign.

## Maloney's Wife



Musical notation for 'Maloney's Wife' in G major and 6/8 time. The piece consists of four staves of music. The first staff begins with a treble clef, a key signature of one sharp (F#), and a 6/8 time signature. The melody is written in a single line. The second staff includes a first ending marked with a '1.' and a second ending marked with a '2.'. The third and fourth staves continue the melody and conclude with a final cadence.

## Have a Drink With Me



Musical notation for 'Have a Drink With Me' in G major and 6/8 time. The piece consists of three staves of music. The first staff begins with a treble clef, a key signature of one sharp (F#), and a 6/8 time signature. The melody is written in a single line. The second and third staves continue the melody and conclude with a final cadence.

# A56

Paddy O'Brien's Sets

## The Hill on The Road

Also known as: The High Part of the Road

Musical notation for 'The Hill on The Road' in G major, 6/8 time. It consists of three staves of music. The first staff begins with a treble clef, a key signature of one sharp (F#), and a 6/8 time signature. The melody is written in a single line. The second and third staves continue the melody, with the third staff ending with a double bar line and repeat dots.

## Contentment is Wealth

Musical notation for 'Contentment is Wealth' in G major, 6/8 time. It consists of three staves of music. The first staff begins with a treble clef, a key signature of one sharp (F#), and a 6/8 time signature. The melody is written in a single line. The second and third staves continue the melody, with the third staff ending with a double bar line and repeat dots. There are '4' markings above the notes in the first and third staves, indicating a four-measure phrase.

## Tell Her I Am

Musical notation for 'Tell Her I Am' in G major, 6/8 time. It consists of five staves of music. The first staff begins with a treble clef, a key signature of one sharp (F#), and a 6/8 time signature. The melody is written in a single line. The second and third staves continue the melody, with the third staff ending with a double bar line and repeat dots. The fourth and fifth staves continue the melody, with the fifth staff ending with a double bar line and repeat dots. There are '1.' and '2.' markings above the notes in the fourth and fifth staves, indicating first and second endings.



The Hills of Kerry

Handwritten musical notation for "The Hills of Kerry". The piece is in G major (one sharp) and 3/4 time. It consists of four staves of music. Chords are written above the notes: G, C, G, E, G, A, C, D, D, G, G, G, G, D, G, G.

Spancil Hill

Handwritten musical notation for "Spancil Hill". The piece is in G major (one sharp) and 3/4 time. It consists of three staves of music. Chords are written above the notes: Dm, Dm, F, C, Dm, F, C, Dm.

Mother's Love is a Blessing

Handwritten musical notation for "Mother's Love is a Blessing". The piece is in G major (one sharp) and 3/4 time. It consists of three staves of music. Chords are written above the notes: A, D, G, D, A, D, D, A, D, F#m, Bm, D, D, D, F#m, Bm, D, D, D, F#m, Bm, C, D, A, D, G, D, Bm, D, A, D, D.

# A58

Paddy O'Brien's Sets

## Kilfinane



Musical notation for the piece "Kilfinane". It consists of four staves of music in treble clef, 6/8 time, with a key signature of one sharp (F#). The first staff begins with a treble clef and a 6/8 time signature. The second staff contains a repeat sign. The third staff also contains a repeat sign. The fourth staff ends with a double bar line and a fermata. A small number "4" is written below the fourth staff.

## Paddy in London



Musical notation for the piece "Paddy in London". It consists of four staves of music in treble clef, 6/8 time, with a key signature of two sharps (F# and C#). The first staff begins with a treble clef and a 6/8 time signature. The second staff contains a repeat sign and a first ending bracket labeled "1.". The third staff contains a second ending bracket labeled "2.". The fourth staff ends with a double bar line and a fermata.

## Tongs By the Fire



Musical notation for the piece "Tongs By the Fire". It consists of three staves of music in treble clef, 6/8 time, with a key signature of one sharp (F#). The first staff begins with a treble clef and a 6/8 time signature. The second staff contains a repeat sign. The third staff ends with a double bar line and a fermata. A small number "4" is written below the third staff.

A59

Paddy O'Brien's Sets

King of the Clans

Musical notation for 'King of the Clans' in G major, 2/4 time. The piece consists of three staves of music. The first staff begins with a repeat sign and a first ending. The second staff contains two triplet markings. The third staff concludes with a double bar line and repeat dots.

My Love is in America

Musical notation for 'My Love is in America' in G major, 2/4 time. The piece consists of three staves of music. The second staff features a triplet marking. The third staff ends with a double bar line and repeat dots.

Flogging

Musical notation for 'Flogging' in G major, 2/4 time. The piece consists of five staves of music. The notation is primarily eighth-note based, with some sixteenth-note runs. The fifth staff concludes with a double bar line and repeat dots.

# A60

Paddy O'Brien's Sets

## The Limerick Lassies

Musical score for 'The Limerick Lassies' in G major (one sharp) and 2/4 time. The score consists of five staves of music. The first staff is the melody. The second and fourth staves contain triplets of eighth notes. The third and fifth staves provide a bass line accompaniment.

## The Old Copper Plate

Musical score for 'The Old Copper Plate' in G major (one sharp) and 2/4 time. The score consists of three staves. The first staff is the melody, featuring a first ending (1.) and a second ending (2.). The second and third staves provide a bass line accompaniment.

## Buckley's Fancy

Musical score for 'Buckley's Fancy' in G major (one sharp) and 2/4 time. The score consists of three staves. The first staff is the melody. The second and third staves provide a bass line accompaniment.

A61

Paddy O'Brien's Sets

Magpie's Nest



Three staves of musical notation for the piece 'Magpie's Nest'. The music is written in treble clef with a key signature of one sharp (F#) and a common time signature (C). The first staff begins with a repeat sign. The melody is characterized by eighth and sixteenth notes, with some slurs and accents.

Chattering Magpie



Four staves of musical notation for the piece 'Chattering Magpie'. The music is written in treble clef with a key signature of one sharp (F#) and a common time signature (C). The melody is characterized by eighth and sixteenth notes, with some slurs and accents.

Kerry

Also known as: The Green Fields of Rossbeigh



Four staves of musical notation for the piece 'Kerry'. The music is written in treble clef with a key signature of one sharp (F#) and a common time signature (C). The melody is characterized by eighth and sixteenth notes, with some slurs and accents.

# A62

## Mari's Wedding

(Scottish)

Musical score for 'Mari's Wedding' in D major, 4/4 time. The score consists of four staves of music. The first two staves are the first system, and the last two are the second system. The melody is written on a treble clef. Chords are indicated by letters D and G above the notes. The piece ends with a double bar line and repeat dots.

## Rowan Tree

Musical score for 'Rowan Tree' in D major, 4/4 time. The score consists of four staves of music. The first two staves are the first system, and the last two are the second system. The melody is written on a treble clef. Chords are indicated by letters A, D, and E above the notes. The piece ends with a double bar line and repeat dots.

The Moran Creek Reel

A63

Jules Morin

The Barkerville Connection

Frank D. Lowery

The Ralph River Breakdown

Royce Webber

A64

### THE MUSICAL PRIEST

Chords: Bm, A, Bm, A, Bm, D, Bm, A, Bm, Bm, A, Bm, Bm, A, Bm.

Triplets: 3, 3.

### THE BANSHEE / MCMAHON'S REEL

Chords: G, C, D, G, C, G, Em, D, G, C, D, G, C, G, Em, D, Am, C, Em, G, Em, Am, C, Em, C, G, Em, D.

### COOLEY'S

Chords: Em, Em, D, D, Em, Em, D, Bm, Em, Em, Em, D, D, Bm, Em, Em, D, Bm, Em.

Triplets: 3, 3.



A 65  
Paddy O'Brien's Sets

Paddy's Resource



Musical notation for 'Paddy's Resource' in G major, 6/8 time. It consists of three staves of music. The first staff begins with a treble clef, a key signature of one sharp (F#), and a 6/8 time signature. The melody is written in a single line. The second staff continues the melody with a repeat sign. The third staff concludes the piece with a final cadence.

The Pipe on the Hob



Musical notation for 'The Pipe on the Hob' in G major, 6/8 time. It consists of three staves of music. The first staff begins with a treble clef, a key signature of one sharp (F#), and a 6/8 time signature. The melody is written in a single line. The second staff includes a first ending marked '1.'. The third staff includes a second ending marked '2.' and concludes with a final cadence.

Blooming Meadows



Musical notation for 'Blooming Meadows' in G major, 6/8 time. It consists of five staves of music. The first staff begins with a treble clef, a key signature of one sharp (F#), and a 6/8 time signature. The melody is written in a single line. The second staff includes a first ending marked '1.'. The third staff includes a second ending marked '2.'. The fourth and fifth staves continue the melody and conclude with a final cadence.

A 66  
Paddy O'Brien's Sets

Paddy Reynolds'

Musical notation for 'Paddy Reynolds' in G major, 6/8 time. It consists of three staves of music. The first staff begins with a treble clef, a key signature of one sharp (F#), and a common time signature. The melody is written in a single line. The second staff continues the melody with a repeat sign. The third staff concludes the piece with a final cadence.

Jer Quigley's

Musical notation for 'Jer Quigley's' in G major, 6/8 time. It consists of three staves of music. The first staff begins with a treble clef, a key signature of one sharp (F#), and a common time signature. The melody is written in a single line. The second staff continues the melody with a repeat sign. The third staff concludes the piece with a final cadence, featuring a triplet of eighth notes.

Hunters House

Ed Reavy

Musical notation for 'Hunters House' in G major, 6/8 time. It consists of four staves of music. The first staff begins with a treble clef, a key signature of one sharp (F#), and a common time signature. The melody is written in a single line. The second staff continues the melody with a repeat sign and a triplet of eighth notes. The third staff features a first ending bracket labeled '1.'. The fourth staff features a second ending bracket labeled '2.' and concludes with a final cadence, including a triplet of eighth notes.

A 67  
Paddy O'Brien's Sets

Reavy's

Ed Reavy (?)

Three staves of musical notation for the piece 'Reavy's'. The first staff begins with a treble clef, a key signature of one sharp (F#), and a common time signature (C). The melody features several triplet markings (indicated by a '3' over the notes) and a repeat sign with first and second endings. The second and third staves continue the melody with various rhythmic patterns and a final double bar line.

The Providence

Three staves of musical notation for the piece 'The Providence'. The first staff begins with a treble clef, a key signature of two sharps (F# and C#), and a common time signature (C). The melody includes triplet markings and a repeat sign with first and second endings. The second and third staves continue the piece with various rhythmic patterns and a final double bar line.

Peeler's Jacket

Four staves of musical notation for the piece 'Peeler's Jacket'. The first staff begins with a treble clef, a key signature of one sharp (F#), and a common time signature (C). The melody includes a repeat sign with first and second endings. The second and third staves continue the piece with various rhythmic patterns. The fourth staff concludes the piece with a final double bar line, with the first and second endings clearly marked above the notes.

A68  
Paddy O'Brien's Sets

Road to Youghal

Musical notation for 'Road to Youghal' in G major, 6/8 time. The piece consists of four staves of music. The first staff begins with a treble clef, a key signature of one sharp (F#), and a 6/8 time signature. The melody is written in a single line. The second and fourth staves feature a triplet of eighth notes. The piece concludes with a double bar line and repeat dots.

Conlan's Well

Musical notation for 'Conlan's Well' in G major, 6/8 time. The piece consists of four staves of music. The first staff begins with a treble clef, a key signature of one sharp (F#), and a 6/8 time signature. The melody is written in a single line. The second and fourth staves feature a triplet of eighth notes. The piece concludes with a double bar line and repeat dots.

The Holly Bush

Musical notation for 'The Holly Bush' in G major, 6/8 time. The piece consists of three staves of music. The first staff begins with a treble clef, a key signature of one sharp (F#), and a 6/8 time signature. The melody is written in a single line. The piece concludes with a double bar line and repeat dots.

A69  
Paddy O'Brien's Sets

Sheehan's

The first piece, "Sheehan's", is written in G major (one sharp) and 2/4 time. It consists of three staves of music. The first staff begins with a repeat sign and contains the first two measures. The second staff continues the melody for the next four measures. The third staff contains the final four measures, ending with a double bar line and repeat dots.

Down the Broom

The second piece, "Down the Broom", is written in G major and 2/4 time. It consists of four staves of music. The first staff contains the first two measures. The second staff continues the melody for the next four measures. The third and fourth staves contain the final four measures, ending with a double bar line and repeat dots.

Kiss Me Kate

The third piece, "Kiss Me Kate", is written in G major and 2/4 time. It consists of four staves of music. The first staff contains the first two measures. The second staff continues the melody for the next four measures. The third staff contains the final four measures, ending with a double bar line and repeat dots. A small number "3" is written below the third staff.

# A70

## THE SILVER SPEAR

Musical score for 'THE SILVER SPEAR' in D major, 4/4 time. The score consists of three staves of music. The first staff has a melody with notes G4, A4, B4, C5, B4, A4, G4, F#4, E4, D4. The second staff has a melody with notes G4, A4, B4, C5, B4, A4, G4, F#4, E4, D4. The third staff has a melody with notes G4, A4, B4, C5, B4, A4, G4, F#4, E4, D4. Chords are indicated above the notes: D, D, Bm, D, D, Bm, D, D, Bm, D, Em, Bm, D, Em, Bm, Em, D, D, Bm.

## MAID BEHIND THE BAR

Musical score for 'MAID BEHIND THE BAR' in D major, 4/4 time. The score consists of three staves of music. The first staff has a melody with notes G4, A4, B4, C5, B4, A4, G4, F#4, E4, D4. The second staff has a melody with notes G4, A4, B4, C5, B4, A4, G4, F#4, E4, D4. The third staff has a melody with notes G4, A4, B4, C5, B4, A4, G4, F#4, E4, D4. Chords are indicated above the notes: D, A7, D, A/c#, Bm, F#m, D, A7, D, A7, D, F#m, Bm, Em, A7, D, D, A7, D, B7, Em, Em/D, A7/c#, A7, D, A/c#, Bm, F#7/Bb, Bm, G, A7, D.

## THE MASON'S APRON

Musical score for 'THE MASON'S APRON' in D major, 4/4 time. The score consists of three staves of music. The first staff has a melody with notes G4, A4, B4, C5, B4, A4, G4, F#4, E4, D4. The second staff has a melody with notes G4, A4, B4, C5, B4, A4, G4, F#4, E4, D4. The third staff has a melody with notes G4, A4, B4, C5, B4, A4, G4, F#4, E4, D4. Chords are indicated above the notes: A, A/E, A, A/E, Bm, Bm/Bb, Bm/A, E7/G#, A, A/E, A, A. The second staff has a melody with notes G4, A4, B4, C5, B4, A4, G4, F#4, E4, D4. Chords are indicated above the notes: D, D, E7, A, E7, A, A, A, A, A. The third staff has a melody with notes G4, A4, B4, C5, B4, A4, G4, F#4, E4, D4. Chords are indicated above the notes: Bm, Bm, Bm, E7, A, C#m, G#, F#m, A/E, D, A/c#, E7/B, A.

# Sonny Brogan's Fancy

A71

jig

Musical notation for 'Sonny Brogan's Fancy' in G major, 6/8 time. The piece consists of four staves of music. The first staff begins with a treble clef, a key signature of one sharp (F#), and a 6/8 time signature. The melody is characterized by eighth-note patterns and includes several trills marked with a '2' over the note. The piece concludes with a double bar line and repeat dots.

# Brian O'Lynn

Trad  
A Dor  
Jig

Musical notation for 'Brian O'Lynn' in G major, 6/8 time. The piece consists of two staves of music. The first staff begins with a treble clef, a key signature of one sharp (F#), and a 6/8 time signature. The melody features eighth-note patterns and trills marked with a '2' over the note. The piece concludes with a double bar line and repeat dots.

# Ben Kelly's Delight

The Rakes of Clonmel

Musical notation for 'Ben Kelly's Delight' in G major, 6/8 time. The piece consists of four staves of music. The first staff begins with a treble clef, a key signature of one sharp (F#), and a 6/8 time signature. The melody is accompanied by handwritten chords: Am, Em, Am, Am, Am, D7, G, D7, G/B, C, G/B, G, C, Em. The piece concludes with a double bar line and repeat dots. Below the main notation, there are three staves labeled 'Variations:' showing different rhythmic and melodic patterns for the same piece.

2 Shetland Reels to follow Da Slookit Light (Tom Anderson) in a set

A72  
Spootiskerry

© Ian Burns, Shetland Isles

Chords for Spootiskerry: G, D7, G, G/B, Em, G/B, Am, D7, G, Am, G/B, Em, C, D7, G, C, G, Em, A7, D7, Em, G/B, G/B, C, Em, D7, G, C, G, Em, A7, D7, G, Am, G/B, Em, C, D7, G, C, G.

Willafjord

(brought back from Greenland whaling expeditions by Shetland fiddlers)

Chords for Willafjord: D, D/F#, G, G/B, D/A, D/F#, Em, A7, D, D/F#, G, Em, A7, A7/C#, D, G, D, D, D/F#, G, A7, D/F#, Bm, Em, A7, D, D/F#, G, G/B, Em, A7, D, G, D.



# A73

## Timmy Clifford's

Handwritten musical notation for "Timmy Clifford's". The piece is in G major and 8/8 time. It consists of four staves of music with the following chords:

Staff 1: G, C, D7, G/E, Em, C, D7, G

Staff 2: G/B, C, D7, Em, G/B, Am, D7, G, D7, G

Staff 3: Em, Bm, D7, G, Em, Bm, A7, D7

Staff 4: Em, Bm, D7, G/E, C, G/B, D7/A, G, D7/A, G

## Sally's Jig

Handwritten musical notation for "Sally's Jig". The piece is in G major and 8/8 time. It consists of four staves of music with the following chords:

Staff 1: G, D7, G, G/B, Am, Am/E, A7, D7

Staff 2: G, D7/A, G/B, Em, C, D7, G, G

Staff 3: G, G/B, C, G/B, Am, Am/E, A7, D7

Staff 4: G, G/B, C, G/B, Am, D7, G, G

## Skipper Lost His Guernsey

Handwritten musical notation for "Skipper Lost His Guernsey". The piece is in G major and 8/8 time. It consists of four staves of music with the following chords:

Staff 1: G, G/B, Am, D7, Am, D7, G, G/B

Staff 2: G, Em, Am, D7, Am, D7, G, G

Staff 3: G, G, Em, G, Am, D7, G, G/B

Staff 4: G, C, Bm, G, Am, D7, G, G

A74  
TOBIN'S FAVORITE

Musical score for 'A74 TOBIN'S FAVORITE' in 6/8 time, key of D major. The score consists of three staves of music. The first staff begins with a treble clef and a key signature of two sharps (D major). The melody is written in eighth notes. The second staff continues the melody with a repeat sign. The third staff concludes the piece with a double bar line and repeat dots. Chord symbols are placed above the notes: D, A, D, Em, A7, D, A, A7, D, D, A7, D, Em, A7, D, A, A7, D, A7, A7, D.

THE SWALLOWTAIL

Musical score for 'THE SWALLOWTAIL' in 6/8 time, key of D major. The score consists of three staves of music. The first staff begins with a treble clef and a key signature of two sharps (D major). The melody is written in eighth notes. The second staff continues the melody with a repeat sign. The third staff concludes the piece with a double bar line and repeat dots. Chord symbols are placed above the notes: Em, Bm, D, G, D, Em, G, D, Em, G, Em, G, Em, G, Em, G, D, Em.

Off She Goes

Musical score for 'Off She Goes' in 6/8 time, key of D major. The score consists of two staves of music. The first staff begins with a treble clef and a key signature of two sharps (D major). The melody is written in eighth notes. The second staff continues the melody with a double bar line and repeat dots. Chord symbols are placed above the notes: D, G, A7, D, D, G, D, A7, D, G, A7, D, G, A7 (Trgd), D, Bm, Em, A7, D, A7, D, Bm, Em, A7, D, G, A7, D.

A75

# 12. Young Tim Murphy

A7 Hartner

Musical notation for 'Young Tim Murphy' in 2/4 time, featuring four staves of music with various chords (D, G, Bm, A7) and a key signature of one sharp (F#).

Roaring Jelly 1-48

Rhythm: jig

# 7. The Cúil Aodha

Musical notation for 'The Cúil Aodha' in 2/4 time, featuring four staves of music with various chords (A, E7, D, B7, Bm) and a key signature of one sharp (F#).

Roaring Jelly 1-53

Rhythm: jig

# 14. All the Rage

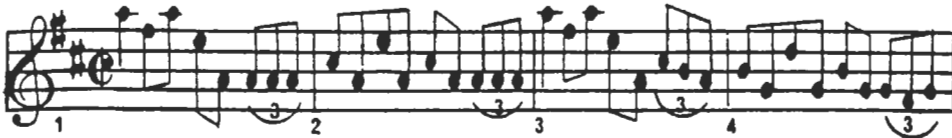
Felipe Unger © 1989

Musical notation for 'All the Rage' in 2/4 time, featuring four staves of music with various chords (E, A, B7, F#m7) and a key signature of one sharp (F#).

Roaring Jelly 1-48

Roaring Jelly

Rhythm: jig



# A77

## Doherty's

REEL

Musical notation for the reel 'Doherty's'. The piece is in G major (one sharp) and 2/4 time. It consists of 16 measures, divided into four systems of four measures each. The notation includes treble clef, a key signature of one sharp (F#), and a common time signature. The melody features various rhythmic patterns, including eighth and sixteenth notes, and includes triplets in measures 3, 10, 14, and 16. Measure numbers 1 through 16 are indicated below the staff.

## Banks of Inverness

Musical notation for the reel 'Banks of Inverness'. The piece is in G major (one sharp) and 2/4 time. It consists of 21 measures, divided into five systems. The notation includes treble clef, a key signature of one sharp (F#), and a common time signature. The melody is accompanied by guitar chords indicated below the staff: G, D, G, D, C, G, D, G, D, G, C, G, D, Em, G, C, Em, D, Em, Em, D, Em, G, D, C, G, D, G, D, G. Measure numbers 1, 6, 11, 16, and 21 are indicated below the staff.

HORNSPIPE

## Scent of the Bog

ACCORDIAN  
ARRANGEMENT

Musical score for "Scent of the Bog" in G major, 2/4 time. The score consists of 16 measures, divided into four systems of four measures each. The melody is characterized by frequent triplet patterns, indicated by a '3' above a group of three notes. The notes are primarily eighth and sixteenth notes, with some quarter notes. The piece concludes with a double bar line at the end of measure 16.

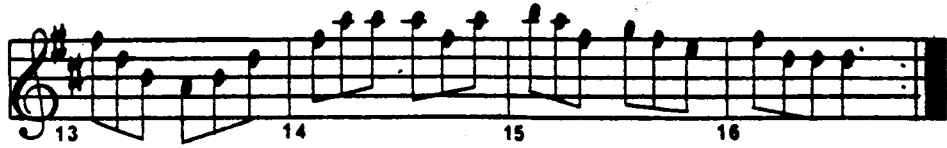
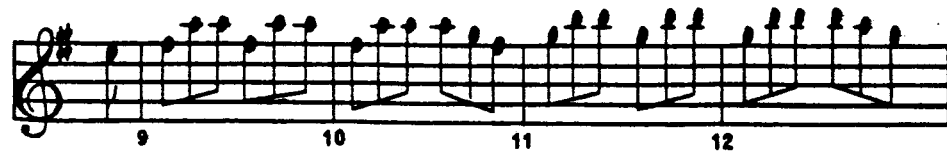
HORNSPIPE

## The Cuckoo

Musical score for "The Cuckoo" in G major, 2/4 time. The score consists of 16 measures, divided into four systems of four measures each. The melody features a mix of eighth, sixteenth, and quarter notes, with several triplet patterns marked with a '3'. The piece ends with a double bar line at the end of measure 16.

**Rose in the Heather**

A PAIR OF JIGS

**Gillian's Apples**

JIG

## The Ship in Full Sail

Musical score for 'The Ship in Full Sail', a jig in G major (one sharp) and 6/8 time. The score consists of four staves of music, numbered 1 through 16. The first staff contains measures 1-4, the second staff contains measures 5-8, the third staff contains measures 9-12, and the fourth staff contains measures 13-16. The music features a mix of eighth and sixteenth notes, with some measures containing beamed eighth notes. The piece concludes with a double bar line at the end of measure 16.

JIG

## The Hag with the Money

Musical score for 'The Hag with the Money', a jig in G major (one sharp) and 6/8 time. The score consists of four staves of music, numbered 1 through 16. The first staff contains measures 1-4, the second staff contains measures 5-8, the third staff contains measures 9-12, and the fourth staff contains measures 13-16. The music features a mix of eighth and sixteenth notes, with some measures containing beamed eighth notes. The piece concludes with a double bar line at the end of measure 16.

CHANGE KEY



A82

### Miko Doyle's Slide (The Old Favourite)

G  $\frac{D7}{A}$   $\frac{G}{B}$  G G  $\frac{G}{B}$  D7 G G Am D7 G

1. Am D7  $\hat{G}$   $\hat{G}$  2. Am D7  $\hat{G}$   $\hat{G}$

G D C  $\frac{G}{B}$  G  $\frac{G}{B}$  D7 G Em Bm C  $\frac{G}{B}$

1. Am D7  $\hat{G}$   $\hat{G}$  2. Am G D7  $\hat{G}$

# A83

Rhythm: strathspey

## Miss Margaret Gordon

Chords for Miss Margaret Gordon: Gm, F, Gm, Gm, F, Eb, D, Gm, Gm, F, Gm, F, Bb, F, Eb, D, Gm, Gm, F, Gm, Dm, Gm, F, D, Gm.

## Miss Stewart of Grantully's Strathspey

*Niel Gow*

Chords for Miss Stewart of Grantully's Strathspey: A, G, A, D, E, A, A, G, A, D, E, A, A, G, A, D, E, A.

## Lochnagar

Chords for Lochnagar: D, Bm, Em, A7, FA7, D, D, G, D, Bm, Em, A7, D, G, A7, D, Bm, Em, A7, D.